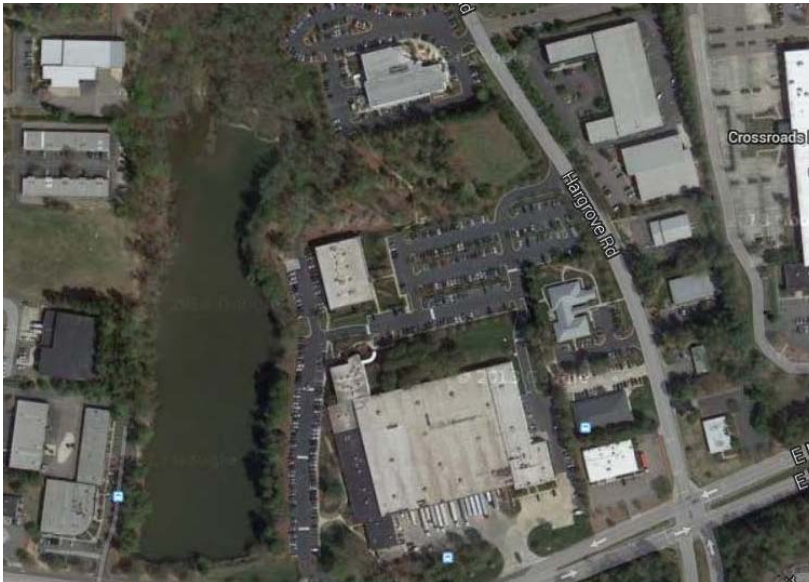


Auto Parts Retailer



Project

Post-Merger Restacks

Primary Tasks

Program Management,
Relocation Management

Size

490,000 SF, 12 buildings
2,200+ staff

Locations

Virginia, Nevada
North Carolina,
California, Nevada
Minnesota

The Challenge

This Auto Parts Retailer completed a large acquisition and committed to anchoring its operations in Virginia and North Carolina. Departments were being realigned and key sites in Virginia, North Carolina, Minnesota, Nevada and California were evaluated for retention. The corporation committed to having the Virginia and North Carolina bases fully occupied and operational within an 18-month period of time. Both sites included multiple buildings and lines of business with extended working hours.

The FM Solution

FM Solutions was engaged to provide project management, space planning, budget and construction phasing scenarios, interior design consultation, and move management services. As the project scope increased and additional sites were tested FM Solutions added staff to provide additional services and meet schedules.

FM Solutions led the Restack Project team of project managers from the internal IT, Construction, Facilities and Security departments; the A/E and general construction contractor; and the furniture vendors. FM Solutions conducted departmental Programming, developed blocking plans and space plans, developed and updated project budgets, maintained a master implementation schedule, and executed swing moves to prepare for construction. Full Move Management services were provided for the project.



County of Chesterfield Space Study



Project

Chesterfield County
Campus Space Study

Primary Tasks

Space Assessment
Space Standard Review
Department Storage/
Warehousing Evaluation
Space Utilization Rec-
ommendations

Size

370,133 SF, 14 build-
ings
2,283 + staff

Location

Chesterfield, Virginia

The Challenge

Chesterfield County sought a solution for the most efficient use of existing facilities at its government complex campus. A comprehensive analysis of buildings, occupancies, and projected growth for personnel and programs was required to identify areas for improvement.

The FM Solution

FM Solutions created a survey tool to collect Department-specific information, benchmark it with County space standards, and project future occupancy needs. When the COVID-19 pandemic arrived, the tool was modified to distinguish “pre-COVID” and “COVID” occupancy, capture teleworking practices, and forecast extended or permanent teleworking teams. The additional data resulted in an enhanced Study to form a basis of design for future planning. Statistical summaries and conceptual drawings were prepared and presented to the County for use in developing options for restacking the campus.